

Transparent weather protection

**TEUFELBSCHLAG**

*We make glass moveable!*



**ClimaCLEAR** →

**Frameless all-glass sliding system  
with weather protection**



## ClimaCLEAR™ — transparent weather protection



Tested for wind and water impermeability as well as for structural windload



Frameless all-glass sliding system



Special floor track for full access with integrated water drainage

ClimaCLEAR by TEUFELBESCHLAG is the only all-glass stacking sliding system especially designed for withstanding all kinds of weather conditions. The thermally non-broken tempered glass system has been independently tested and is the first choice for separating indoor and outdoor living areas in a flexible way no matter if in the private or public sector.

Without vertical posts, ClimaCLEAR stands for maximum transparency, natural daylight and clear modern structures matching all kinds of styles. No matter if opened or closed: this unobtrusive system doesn't disturb the observer's view in the least.

Even when the panels are closed the aesthetic of an all-glass system can be enjoyed while at the same time benefitting from excellent weather and sound protection.

In moderate climates ClimaCLEAR can help create a modern indoor / outdoor lifestyle wherever needed and favourable; may it be the living, dining or cooking area.

In colder climates, even if the days are already getting shorter, terraces, verandas and patios can still be used by framing them with TEUFELBESCHLAG's ClimaCLEAR. Meet the elements without completely shutting off the outside. As an added benefit outdoor furniture is also being protected from rain and wind.

In the commercial sector or at sport facilities ClimaCLEAR provides an undisturbed view on events.



WE MAKE GLASS MOVEABLE

**ClimaCLEAR by TEUFELBESCHLAG is THE innovative solution for flexibly separating outdoor areas while providing maximum transparency, structural stability and tested weather protection. Here are some of the technical features making ClimaCLEAR special:**

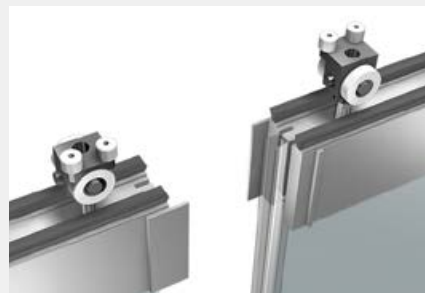
**Transparent, vertical weather seals**

Highly transparent edge profiles between the panels safely keep out wind driven rain and minimize air infiltration. With an independently certified light transmittance (LT) of 75% these weather profiles almost disappear from view.

**Enhanced panel connections for additional weather protection**

Alternately offset end caps at the top and bottom door rail provide for additional weather protection.

Due to the use of foot-activated locking bolts the panels are easily locked in place without the necessity to kneel down and manually lock each of them.





#### **Horizontal brush seals on both sides**

All horizontal upper and lower door rails are equipped with brush seals on both sides offering even better weather protection.

#### **Enhanced water drainage system**

The standard recessed low sill profile forms part of ClimaCLEAR's especially developed water drainage system. Added drainage holes ensure for water to drain off and thus prevent rain from seeping in. The special sill with adjustable floor sockets is compliant for full access.

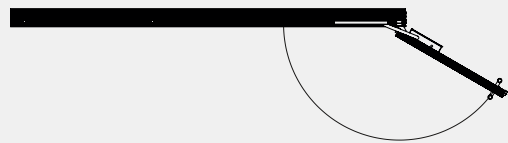
#### **Security features**

Structural stability is achieved by combining strong rollers, clamping profiles for 12 mm glass and the special locking system. Each panel can be securely locked at the designated spot.

Standard to the double action panel is the TUBO 200 handle /lock combination starting at hand height and running all the way up to the upper door rail. TUBO 200 can be locked from the outside as well as from the inside and is additionally locked in the lower door rail. Therefore this system meets the demands for preventing forceful access.

#### **Double action door for comfortable passage**

ClimaCLEAR is outfitted with a double action door with top door closer. This swing panel with offset pivot allows for a maximum opening of 150° to the inside and 110° to the outside. A test run of 500,000 opening and closing cycles has been successfully conducted proving the quality of our products. Adjustments for full access are possible.





### Single-handed operation

With its high-quality guiding roller technology, our roller system – made in Germany – allows for quiet, guided and easy single-handed operation.

### Glass options

12 mm tempered glass is ClimaCLEAR's standard glass. All vertical edges are polished. In case of lesser structural requirements ClimaCLEAR can also be outfitted with laminated safety glass for enhanced safety as well as acoustical and / or UVprotection. Further glazing options such as satinised glass are possible.

### Adjustable panel sizes

Depending on the windload to be borne, the maximum height can be 3,200 mm at a maximum width of 1,250 mm. Single action doors can have a width of up to 1,100 mm.

Please consider your local regulations for maximum measurements of 12.76 mm laminated safety glass.

For tight parking conditions where a single action panel is needed, a small swing panel (500 mm) is also available.

### Single track sliding system

Due to the flexible single track system an almost infinite number of panels can be aligned in straight openings of any size.

### Flexible panel parking

In order to use the given space in the best possible way the ideal layout can be chosen from a multitude of parking arrangements.



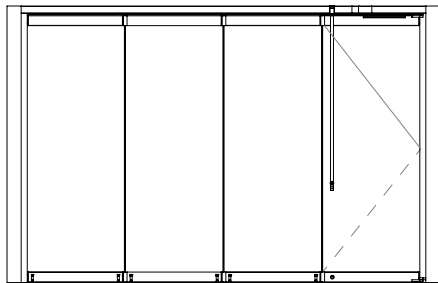


Testing results	
<b>Air Infiltration</b> *1 ASTM E-283	@ <b>1.57</b> psf (75 Pa): <b>0.46</b> cfm/ft2
<b>Water Penetration</b> *1 ASTM E-331, E-547	No uncontrolled water entry @ <b>3</b> psf (150 Pa)
<b>Structural Load Deflection</b> *1 ASTM E-330 with 1/2" (12 mm) tempered glass Note that the structural test pressures were 50% higher than the design pressures.	<b>Design Pressure</b> Positive @ 30 psf (1436 Pa) Negative @ 30 psf (1436 Pa) Panel size: 8' 4" (2540 mm)
<b>Forced Entry Resistance</b> *1 AAMA 1304	Pass
<b>Cycle Testing</b> *1 AAMA 920	Swing panel 500,000 cycles: Pass
<b>Acoustical Performance</b> ASTM E-90, E-1332	STC 34 OITC 28 with sound enhanced laminated glass

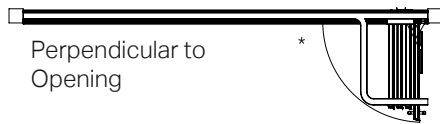
\*1. Excerpts of results of four panel unit size 12' 0" W x 8' 8" H (3676 mm x 2642 mm) with three sliding panels and an end swing panel tested by Architectural Testing, Inc., Fresno, CA, an independent testing laboratory in November 2016.

EXAMPLE PARKING SCENARIOS  
 VARYING PANEL NUMBERS ARE POSSIBLE

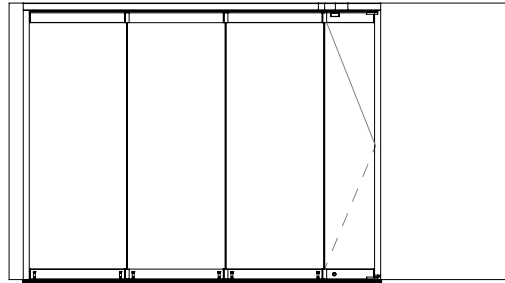
Depending on the requirements a single-action panel can be placed on one or both ends of the system



With Full Size Swing Panel and Reverse Tubo200 Locking



Perpendicular to Opening \*

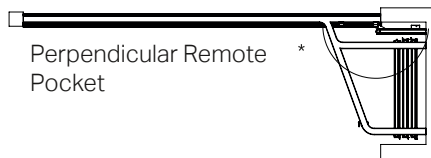


With Half Size Swing Panel and Crank Handle Locking



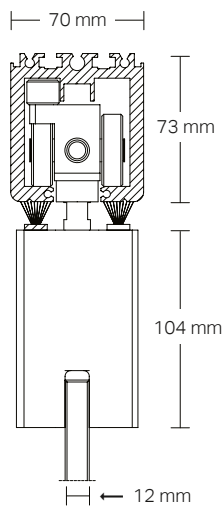
Parallel Pocket \*

Narrower swing panel option for more compact stacking.



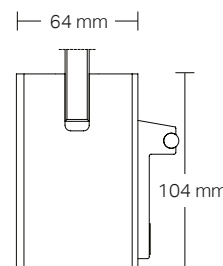
Perpendicular Remote Pocket \*

\* = INTERIOR

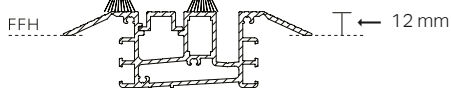


12 mm

Scale: 1/4"=1"



Floor track with foot-activated locking and full-access recessed low sill



VARIOUS DESIGNS

ClimaCLEAR can be delivered in all anodized and RAL colours. Please contact us for further options.

# ClimaCLEAR – transparent weather protection



## TEUFELBESCHLAG

TEUFELBESCHLAG with its focus set on technical perfection is one of the leading manufacturers of solid glass fittings in Germany. We are setting trends for this kind of fittings and our customers all around the world profit from our 40 years of experience in development and production.

Our high amount of flexibility goes easily along with our goal of combining high-quality and longevity in our products. TEUFELBESCHLAG systems are easy to be mounted while at the same time aiming for a great freedom of design.

## We make glass moveable!

For further information, please visit our website [www.teufelbeschlag.com](http://www.teufelbeschlag.com)



Folding systems



Sliding systems



Frameless stacking sliding systems

## TEUFELBESCHLAG GmbH

Am Brand 8  
82299 Tuerkenfeld  
Germany

Phone: +49 8193 / 93 93 90  
Fax: +49 8193 / 93 93 99  
E-Mail: [info@teufelbeschlag.de](mailto:info@teufelbeschlag.de)

[www.teufelbeschlag.com](http://www.teufelbeschlag.com)